

SPECIFICATIONS

CAMERA

Image sensor: color 1/3" CCD
Resolution: 380 TV lines
Color std: PAL
Lens: f 3.8
Focus: fixed
White balance: auto
Lighting: LED high illumination

Internal camera movement:
tilt: 160°, 160°/sec
rotation: 160°, 160°/sec

CONTROL UNIT

Monitor : 7" high contrast
Video recording: YES
Trolley control: Digital
Camera moving control:
Digital with potentiometers
with readout in degrees of the
viewing point.
Lighting dimming control:
potentiometer for 0-100% of light.
Easy to use:
The fast response of the camera
combined with the read out of the
viewing point makes the system
practical and easy to use.

TROLLEY

Material: High quality plastic
Length: 57 cm
Width: 10 cm
High: 9 cm
Weight: 4,5 kgr
Protection: IP 65
Motion: 2 x 20 watt motors
Power autonomy: about 500 m of inspection
depending on case.
Power supply: Rechargeable batteries

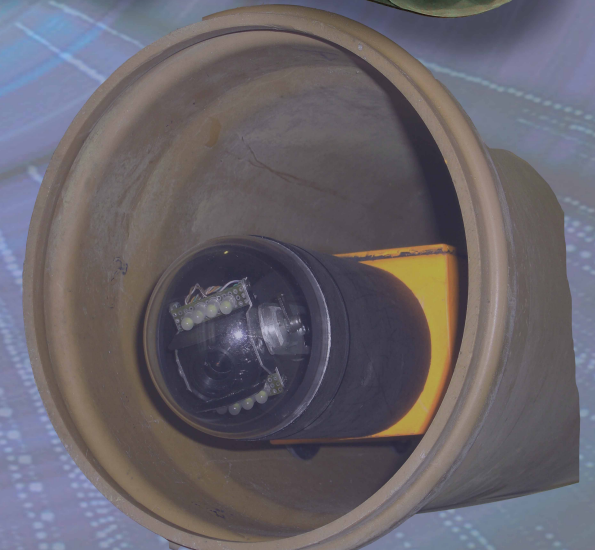
CABLE REEL

Operation: Electrical motorized
Power supply: Rechargeable batteries or 12V external power
Cable length: 100 meters.
Cable reel/unreel speed: digital controlled by the control unit
0 to 25 meters per minute.
Weight : 8 kgr

PORTABLE SYSTEM FOR OPTICAL INSPECTION OF PIPES

E F P I 15-40

**WITH MOVING CAMERA
WITH SPEED 160°/sec**



Digital technology
For pipes 150 to 400 mm
Reliable and accurate
Battery power operated
One person portable

The system is covered by 1 year warranty and continuous technical support.
Specifications are subject of change.
The system is custom able and can be designed according to custom specifications.
If you are interested in similar application please contact us.

CONTACT: tel:+302106564455 fax:+302106563595
e-mail: info@robo-eye.com, tsousis@lte.gr
contact person : Lefteris Tsousis, electrical engineer

www.robo-eye.com

designed by: www.lte.gr

EFPI 15-40 PORTABLE SYSTEM FOR OPTICAL INSPECTION OF PIPES 150 - 400 mm

EFPI 15-40 system was designed to cover optical inspection needs at the inside of pipes of minimum clear diameter 150 mm. It is a high technology product and combines analog and digital state of the art technology. The system is powered by rechargeable batteries and can be carried by 1 person, making possible the inspection even at the most inaccessible areas. EFPI 15-40 was designed and manufactured to be adapted at the needs of each project and cover every application with the best technical support.

Dimensions:
30 x 28 x 12 cm
Weight: 2 kgr



High contrast TFT 7" monitor with record capability. The recorded video can be transferred to a PC and be burned to a DVD record.

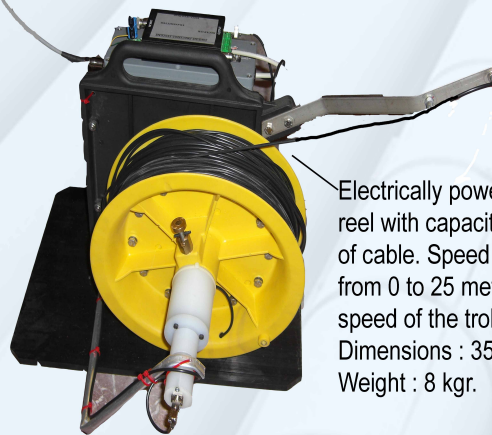
Ergonomic analog joystick for speed and direction control of the trolley.

Dimmable lighting

Analog potentiometers controlling the rotation of the camera, with readout of the viewing angle. User always knows the point of inspection.

EFPI 15-40

THE PORTABLE SMART SYSTEM
FOR PIPELINE INSPECTION



Electrically powered cable reel with capacity of 100 meters of cable. Speed is controlled digitally from 0 to 25 meters/min according to the speed of the trolley.
Dimensions : 35 x 35 x 45 cm.
Weight : 8 kgr.

High quality small diameter cable (3 mm).

The system can be carried by one person with total carrying weight of about 20 kgr.



Control unit

Motorized cable reel
100 meters

Trolley system

Trolley with remote controlled pan-tilt camera. Speed is digitally controlled 0-25 meters/min. IP 65 protection. 2 set of wheels for best fitting in pipes of diameter from 150 to 400 mm.

Color CCD camera, with internal movement of 2 directions, 160 deg in each direction. Speed of movement: 160 deg/sec.



4 wheel drive system for maximum traction with 2 motors 20 watt each and steering capability.
Dimensions : 57 x 10 x 9 cm
Weight 4,5 kgr.

Dimmable lighting with high illuminating LEDs.

info : www.robo-eye.com

designed by : www.lte.gr